



DATE

JOB NAME

TYPE

**Features** **Applications**

- Adjustable design for directing light
- Exterior use for all weather conditions
- Uses T5, T5HO, T8, T8HO or T12HO lamps

- Public Areas
- Facades
- Parking Structures
- Billboards

Series	Size	Lamps	Watts	Voltage	Tandem
ODL	4FT 6FT 8FT	1 2(SPECIAL)	28WT5 54WT5HO 32W T8 48W T12HO 72W T12HO 59W T8, 86W T8HO 96W T12HO	120 277 UNV (T12 DEDICATED VOLTAGE ONLY)	-8-8' (4' lamps only) -12-12' (6' lamps only) -16-16' (8' lamps only)

Ordering Example: ODL-8FT-1-59WT8-UNV

**Details**

**Application Features:** Specification grade, fluorescent signlight. For use in exterior applications where a T8, T8HO, T12 or T12HO fixture with 360 degree adjustable design is required. Available as individual fixtures or joined together for mounting in continuous rows. Available in 4', 6' and 8' lengths.

**Construction:** Anodized extruded aluminum housing with acrylic lens, cast aluminum ends and adjustable hubs. End caps also function as splice boxes.

**Finish:** Aluminum.

**Electrical:** Electronic ballasts are class P, thermally protected housed in remote weather proof box.

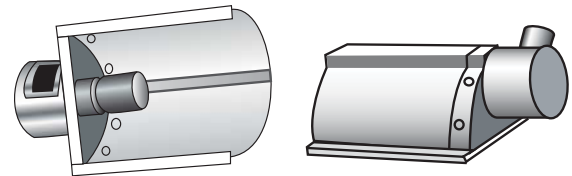
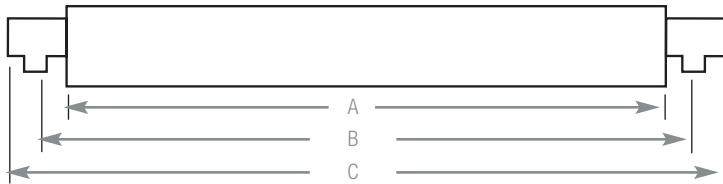
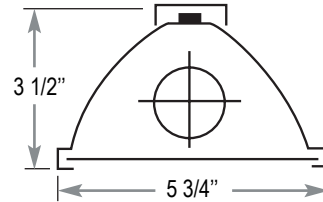
**Approvals:** Union made, UL listed, and manufactured in the US; IP 65, 66 and 67 rated.

**Mounting:** 3/4" mounting holes (pipe not included).

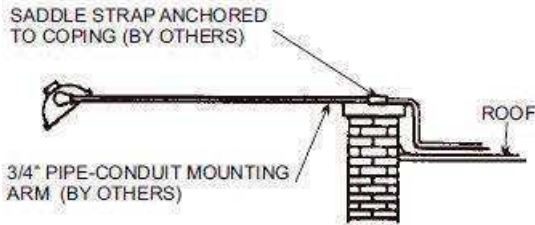
**Optics:** High reflective white enamel internal reflector with flat clear high impact acrylic lens.

DISCLAIMER: CORONET INC RESERVES THE RIGHT TO MAKE ANY DESIGN CHANGES FOR CONTINUOUS IMPROVEMENT WHICH WILL NOT AFFECT THE OVERALL APPEARANCE OR PERFORMANCE. ALL CEILINGS ARE TO BE ADEQUATELY REINFORCED BY OTHERS BEFORE INSTALLATION. ALL FIXTURES ARE TO BE WIRED BY A CERTIFIED ELECTRICIAN ONLY. THIS INFORMATION IS PROPERTY OF CORONET INC., AND THE INFORMATION IT CONTAINS MAY NOT BE USED WITHOUT ANY WRITTEN CONSENT OF CORONET INC.

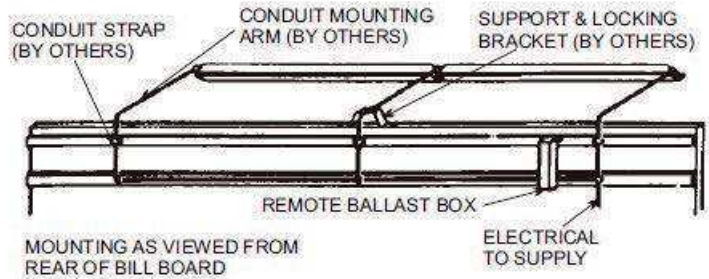
Model	A	B	C
4FT	48-1/4"	50-3/8"	52-3/8"
6FT	72-1/4"	74-3/8"	76-3/8"
8FT	96-1/4"	98-3/8"	100-3/8"



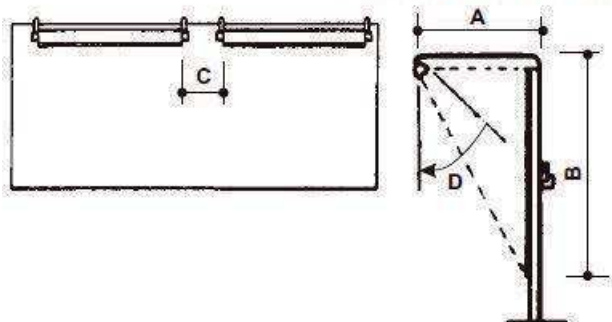
**BUILDING MOUNTING**



**BILLBOARD MOUNTING**

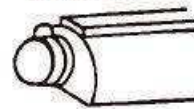


**LUMINAIRE SPACING AND MOUNTING**



1. Dim. C should not exceed dimensions of A.
2. Dim. B should be twice the dimension of A.
3. If Dim. B exceeds 15 ft. then luminaires should be installed at top and bottom of area to be illuminated.
4. Angle of Dim. D should be 45° if dimensions are as outlined in paragraph No. 2. If Dim. A is four times less than Dim. B then angle should be 22.5°.

**INDIVIDUAL**



**CONTINUOUS RUN**

