



DATE

JOB NAME

TYPE

Features	Applications
----------	--------------

- Adjustable Staggered Strip fixtures designed for continuous row mounting with adjustable overlap to allow even lighting without socket shadows or dark spots
- Field adjustable for 4" - 12" overlap

- Cove Lighting
- Soffits
- Corridors
- Signage
- Display Areas

Series	Lamps	Size (min-max)	Voltage	Options
ADJ-STAG	2-14W T5 2-24W T5HO	(34" - 41")	120 277 UNV	EM-EM Pack 1-lamp DB-Dimming Ballast
	2-21W T5 2-39W T5HO	(52" - 64-1/2")		
	2-28W T5 2-54W T5HO	(76-1/4" - 87-1/2")		

Ordering Example: ADJ-STAG-2-28T5-UNV-EM

## Details

**Application Features:** Specification grade fluorescent adjustable staggered channel. For use in indoor applications where a T5 or T5HO striplight with field adjustment for 4" - 12" overlap to allow uniform lighting without socket shadows is required. Available with 2', 3' and 4' lamps.

**Construction:** Die formed 20 ga. pre-painted white cold rolled steel. Two-piece housing mechanically fastens together and tightens down at required overlap. Sufficient knock-outs provided for flexible conduit attachment.

**Finish:** Prepainted highly reflective white.

**Electrical:** Electronic ballasts are class P, thermally protected.

**Approvals:** Union made, UL Listed, and Manufactured in the USA.

**Options:** Emergency Battery Backup, Dimming Ballasts.



MINIMUM OVERALL LENGTH

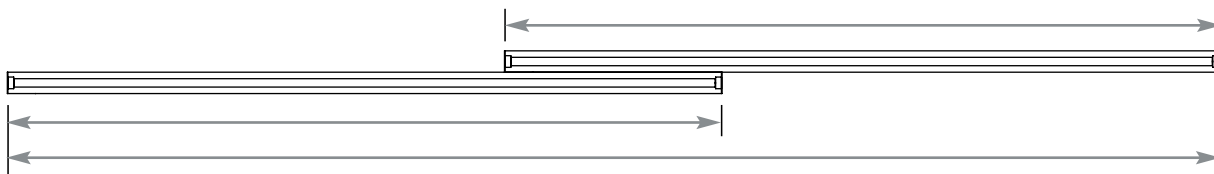
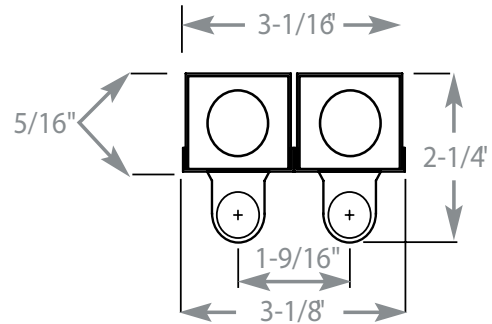


MIDDLE OVERALL LENGTH

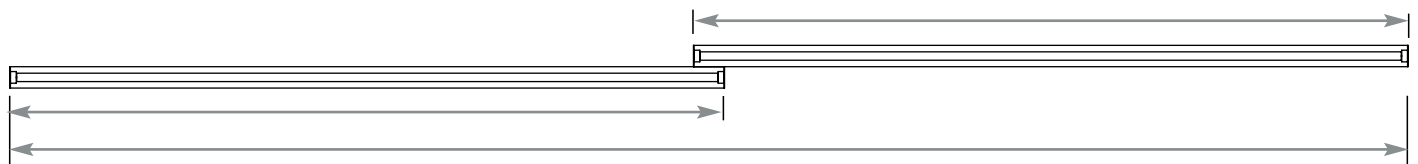


MAXIMUM OVERALL LENGTH

END VIEW



MINIMUM OVERALL LENGTH



MAXIMUM OVERALL LENGTH