



# LUMINAIRE TESTING LABORATORY, INC.

SUSTAINING  
MEMBER  
of the  
IESNA

905 Harrison Street · Allentown, PA 18103 · 610-770-1044 · Fax 610-770-8912 · www.LuminaireTesting.com

LTL NUMBER: 11015

DATE: 03-12-2007

PREPARED FOR: CORONET, INC.

CATALOG NUMBER: LINEAR 850

LUMINAIRE: FORMED STEEL HOUSING WITH PERFORATED BOTTOM SECTIONS, FORMED SPECULAR ALUMINUM REFLECTOR WITH 8, 3/8" X 10-7/8" SLOTS, OPEN TOP.

LAMPS: THREE 54 WATT HIGH OUTPUT T5 LINEAR FLUORESCENT LAMPS RATED AT 4400 LUMENS EACH.

LAMP CATALOG NUMBER: PHILIPS F54T5/850/HO/ALTO

BALLAST: ONE UNIVERSAL LIGHTING TECHNOLOGIES B454PUNV-E

MOUNTING: PENDANT

LUMEN TO CANDELA RATIO USED = 9.18

TOTAL INPUT WATTS = 179.6 AT 120.0 VOLTS

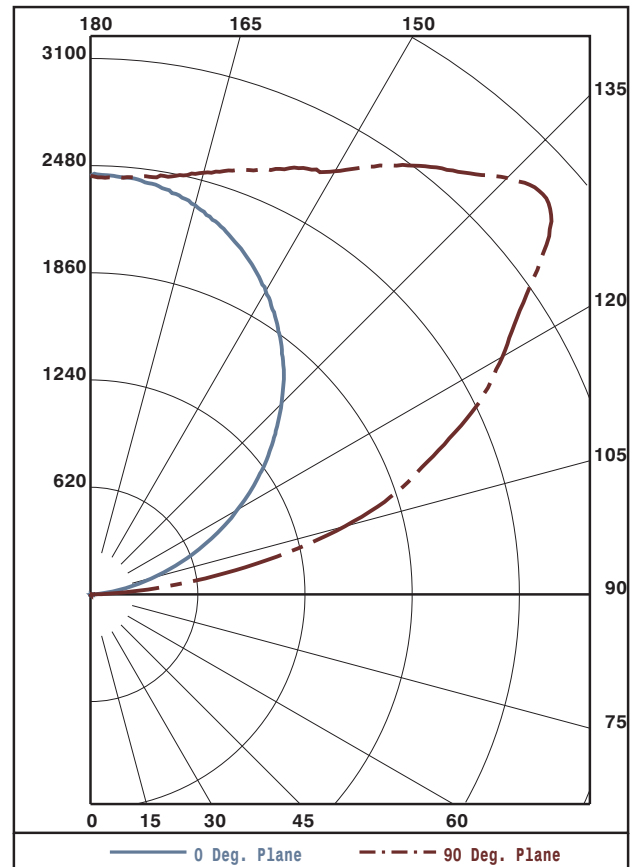
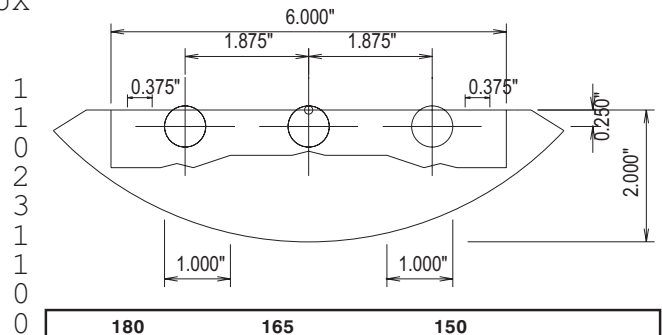
THE 0 DEGREE PLANE IS PARALLEL WITH THE LAMPS.

#11015

### CANDELA DISTRIBUTION

	0.0	22.5	45.0	67.5	90.0
0	9	9	9	9	9
5	10	6	6	6	0
15	6	4	3	1	0
25	0	0	0	4	0
35	6	5	3	4	3
45	0	3	6	5	6
55	4	0	0	0	0
65	0	1	1	0	0
75	0	0	0	0	0
85	0	0	0	0	0
90	0	10	18	23	23
95	55	321	336	335	333
105	372	1075	1359	1495	1524
115	776	1481	2126	2341	2397
125	1186	1656	2655	3087	3101
135	1562	1863	2560	3158	3406
145	1887	2049	2477	2859	3028
155	2147	2221	2445	2634	2721
165	2332	2362	2433	2497	2525
175	2420	2410	2428	2425	2423
180	2421	2421	2421	2421	2421

### FLUX



### ZONAL LUMEN SUMMARY

ZONE	LUMENS	%LAMP	%FIXT
0- 30	1	0.0	0.0
0- 40	4	0.0	0.0
0- 60	8	0.1	0.1
0- 90	9	0.1	0.1
90-120	3491	26.4	31.3
90-130	5621	42.6	50.3
90-150	9116	69.1	81.6
90-180	11162	84.6	99.9
0-180	11170	84.6	100.0

TOTAL LUMINAIRE EFFICIENCY: 84.6%

CIE TYPE: INDIRECT

PLANE: 0-DEG 90-DEG

SPACING CRITERIA: 0.6 0.0

Approved By: MG

THIS REPORT BASED ON LM-41 AND OTHER PERTINENT IESNA PROCEDURES.



LUMINAIRE TESTING LABORATORY, INC.

SUSTAINING MEMBER of the IESNA

905 Harrison Street · Allentown, PA 18103 · 610-770-1044 · Fax 610-770-8912 · www.LuminaireTesting.com

LTL NUMBER: 11015
PREPARED FOR: CORONET, INC.

DATE: 03-12-2007

COEFFICIENTS OF UTILIZATION - ZONAL CAVITY METHOD
EFFECTIVE FLOOR CAVITY REFLECTANCE 0.20

Table with columns RC, RW, and rows for angles 80, 70, 50, 30, 10, 0. Each row contains 16 numerical values representing coefficients.

PLANE: 0-DEG 90-DEG
LUMINOUS LENGTH: 46.000 1.875
HEIGHT OF SIDE: 0.000 0.250

Table with columns ANGLE IN DEG, AVERAGE 0-DEG, AVERAGE 45-DEG, AVERAGE 90-DEG. Rows for angles 0, 45, 55, 65, 75, 85.



LUMINAIRE TESTING LABORATORY, INC.

SUSTAINING MEMBER of the IESNA

905 Harrison Street · Allentown, PA 18103 · 610-770-1044 · Fax 610-770-8912 · www.LuminaireTesting.com

LTL NUMBER: 11015
PREPARED FOR: CORONET, INC.

DATE: 03-12-2007

Table with columns: CANDELA DISTRIBUTION (0.0, 22.5, 45.0, 67.5, 90.0) and ZONAL LUMEN SUMMARY (0-5, 5-10, etc.).

THIS TEST WAS CONDUCTED USING RELATIVE PHOTOMETRY TECHNIQUES ACCORDING TO STANDARD IESNA PROCEDURES. THE USER MUST THEREFORE USE CAUTION IN THE FOLLOWING SITUATIONS: 1) THIS TEST WAS PERFORMED USING A SPECIFIC BALLAST/LAMP COMBINATION. EXTRAPOLATION OF THESE DATA FOR OTHER BALLAST/LAMP COMBINATIONS MAY PRODUCE ERRONEOUS RESULTS. 2) ACCORDING TO IESNA PROCEDURES, THE BALLAST(S) AND LAMP(S) ARE PRESUMED TO PRODUCE 100% OF RATED OUTPUT. AN APPROPRIATE BALLAST FACTOR MUST BE APPLIED TO THE LUMEN OUTPUT RATINGS AND LUMINOUS INTENSITY VALUES GIVEN. 3) THIS TEST WAS CONDUCTED IN A CONTROLLED LABORATORY ENVIRONMENT WHERE THE AMBIENT TEMPERATURE WAS HELD AT 25°C ±1°C. FIELD PERFORMANCE MAY DIFFER PARTICULARLY IN REGARDS TO CHANGE IN LUMINOUS OUTPUT AS A RESULT OF DIFFERENCE IN AMBIENT TEMPERATURE AND METHOD OF MOUNTING THE LUMINAIRE.